

PARKING LOT LIGHTING

Outdoor Industrial Applications

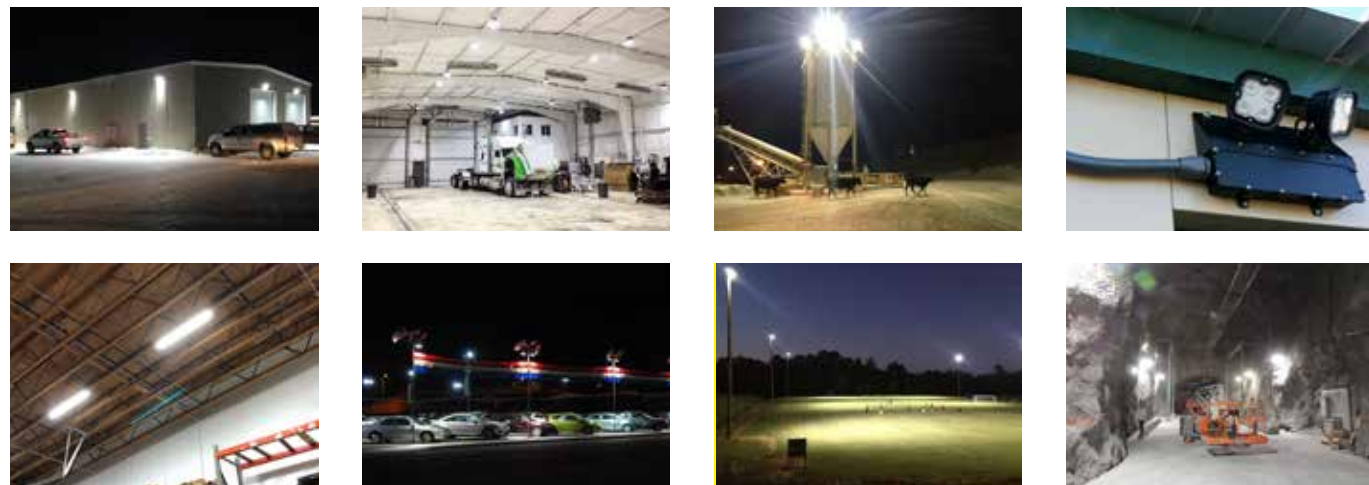


LED | LIGHTING CATALOG

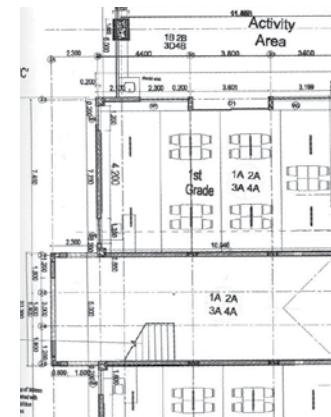


ENGINEERED LIGHTING SOLUTIONS

Vision X lighting fixtures are not merely lighting systems, they are engineered lighting solutions. They provide increased efficiency, increased safety, decreased environmental impact, and decreased costs. Vision X LED lights offer a large increase in energy efficiency over older technologies while also increasing the safety and productivity of the working environment by outputting 80% more light than the fixtures used previously.

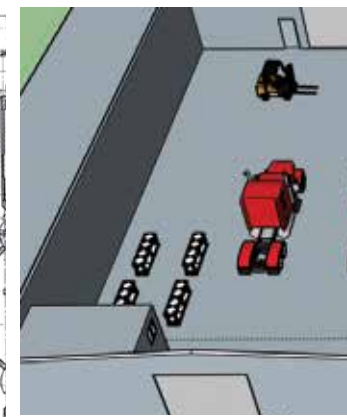


SOLUTION PROCESS



2D BLUEPRINT

Vision X Lighting begins each project with a customer provided list of applications to retrofit, then gathers the technical information for those applications.



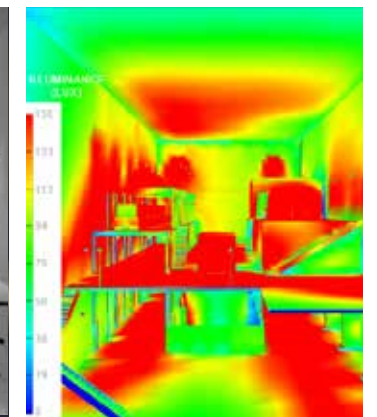
3D MODEL

A 3D model is built to the customer's specifications, then carried over into the rendering.



SIMULATION RENDER

A simulation rendering ensures the final product will meet the customer's lighting requirements.

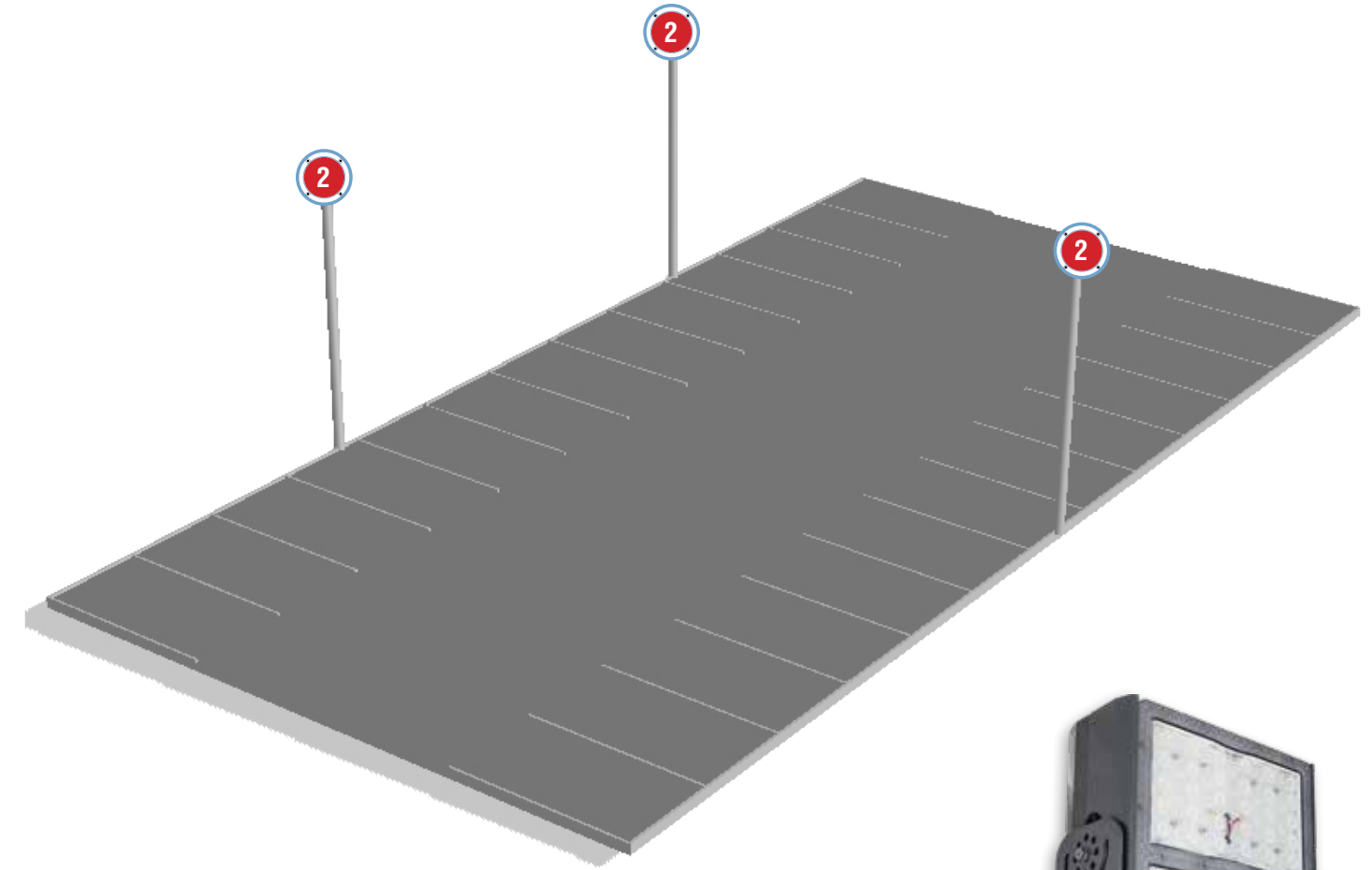
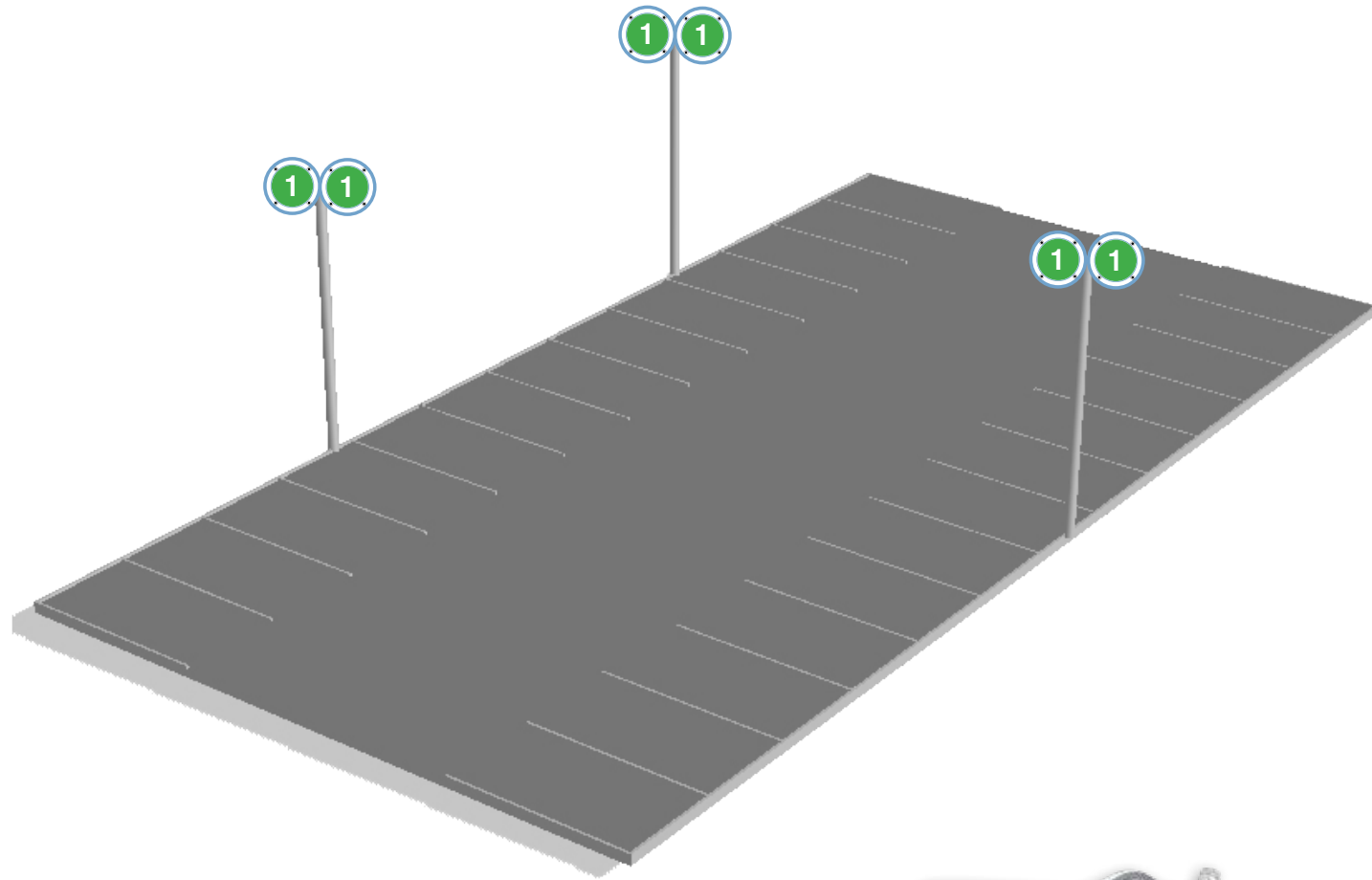


SOLUTION

Vision X Lighting creates a complete breakdown of the customer's specific needs to meet their safety requirements.



PARKING LOT FITOUT GUIDE



1 140W HIGH BAY



400-500W HPS REPLACEMENT
AC SERIES LIGHTING
 Number of Fixtures : Application Specific
 Location : Pole-Mounted
 Beam Pattern : **10°, 25°, 40°, 60°, 90°**
 Part # : **LSG0630xx**



Cobra head mount
 suited for street and
 parking lot lighting.

ITEM# : LSG0630xxCHM2
ITEM# : LSG0630xxCHM2.5
ITEM# : LSG0630xxCHMw3
 (2", 2.5", 3" Diameter Cobra Head Mount Kits)
 Part numbers listed for 140-Watt fixture.
 Also available for the 280 -Watt fixture.

2 280W HIGH BAY



1000W HPS REPLACEMENT
AC SERIES LIGHTING
 Number of Fixtures : Application Specific
 Location : Pole-Mounted
 Beam Pattern : **10°, 25°, 40°, 60°, 90°**
 Part # : **LSG0660xx**



Easily and securely
 mount to poles with
 universal slip-fitter and
 stainless steel bolts.

ITEM# : LSG0660xxTRUS2
ITEM# : LSG0660xxTRUS2.5
ITEM# : LSG0660xxTRUS3
 (2", 2.5", 3" Diameter Pole Mount Kits)
 Part numbers listed for 280-Watt fixture.
 Also available for the 140-Watt fixture.



PARKING AREA LIGHTING

Product Information

Project Name:
Date:
Type:

Application

Designed to outshine and outlast the competition, the High Bay fixture features advanced electronic technology like Pulse Width Modulation, Electronic Thermal Management, and a Redundant Circuit Design that allow the fixture to function even if half of the light should fail in harsh conditions. This is part of the effort by Vision X to ensure that the fixture is the most dependable LED fixture in the workplace.

SPECIFICATIONS

Mechanical Information:

Fixture Weight:	22.05 lbs (10kg)
Shipping Weight:	26.9 lbs (12.2kg)
Mounting/ Entries: (See Accessories)	(1) 3/4" NPT - TOP (2) 3/4" NPT 90° - SIDES (2) 3/4" NPT 45° - SIDES

Electric Specifications:

Operating Voltage:	90 - 305V AC 127 - 431V DC
Lumens:	18000 - 21000 lm
Wattage:	140W
Operating Temp:	-40°C ~ 60°C
THD:	<20% (@load≥50% / 115VAC,230VAC) (@load≥75% / 277VAC)
Power Factor:	≥ 0.98/115VAC ≥ 0.95/230VAC ≥ 0.92/277VAC
Short Circuit:	Constant Current Limiting, Recovers Automatically After Fault Condition is Removed
Frequency:	47-63Hz
Vibration:	15.6Grms

Construction:

Housing:	Die-Cast 6061 Aluminum
Finish:	Gloss Grey
Lens:	Polycarbonate Lens

LED Light Engine / Driver

LED:	XP-LHD(CREE)
Amp Draw:	1.22A @ 115VAC 0.61A @ 230VAC 0.51A @ 277VAC
Lifespan:	50,000 hr



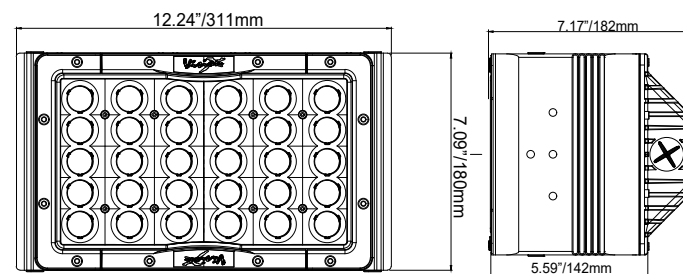
High Voltage Available



Universal Slipfitter

PART #:	BEAM PATTERN
1 LSG0630xx	10°, 25°, 40°, 60°, 90°
LSG0270180	180°

2D DRAWING:



RATINGS:

EMC Emission:	Compliance to EN55015, EN55022 (CISPR22) Class B, EN61000-3-2 Class C (@Load ≥ 50%); EN61000-3-3
EMC Immunity:	Compliance to EN61000-4-2,3,4,5,6,8,11, EN61547, EN55024, Light Industry Level (surge immunity Line-Earth 4KV, Line-Line 2KV)
UL 1598A Marine:	✓
Ingress Protection:	IP-68, IP69k



PARKING AREA LIGHTING

Product Information

Project Name:
Date:
Type:

Application

Designed to outshine and outlast the competition, the High Bay fixture features advanced electronic technology like Pulse Width Modulation, Electronic Thermal Management, and a Redundant Circuit Design (60 LED) that allow the fixture to function even if half of the light should fail in harsh conditions. This is part of the effort by Vision X to ensure that the fixture is the most dependable LED fixture in the workplace.

SPECIFICATIONS

Mechanical Information:

Fixture Weight:	37.05 lbs (16.81kg)
Shipping Weight:	40.05 lbs (18.17kg)
Mounting/ Entries: (See Accessories)	(1) 3/4" NPT - TOP (2) 3/4" NPT 90° - SIDES (2) 3/4" NPT 45° - SIDES

Electric Specifications:

Operating Voltage:	90 - 305V AC 127 - 431V DC
Lumens:	36000 - 42000 lm
Wattage:	280W
Operating Temp:	-40°C ~ 60°C
THD:	<20% (@load≥50% / 115VAC,230VAC) (@load≥75% / 277VAC)
Power Factor:	≥ 0.98/115VAC ≥ 0.95/230VAC ≥ 0.92/277VAC
Short Circuit:	Constant Current Limiting, Recovers Automatically After Fault Condition is Removed
Frequency:	47-63Hz
Vibration:	15.6Grms

Construction:

Housing:	Die-Cast 6061 Aluminum
Finish:	Gloss Grey
Lens:	Polycarbonate Lens

LED Light Engine / Driver

LED:	XP-LHD(CREE)
Amp Draw:	2.43A @ 115VAC 1.22A @ 230VAC 1.01A @ 277VAC
Lifespan:	50,000 hr

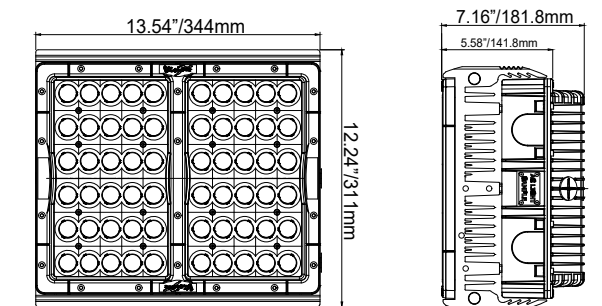


High Voltage Available



PART #:	BEAM PATTERN
2 LSG0660xx	10°, 25°, 40°, 60°, 90°
LSG02140180	180°

2D DRAWING:



RATINGS:

EMC Emission:	Compliance to EN55015, EN55022 (CISPR22) Class B, EN61000-3-2 Class C (@Load ≥ 50%); EN61000-3-3
EMC Immunity:	Compliance to EN61000-4-2,3,4,5,6,8,11, EN61547, EN55024, Light Industry Level (surge immunity Line-Earth 4KV, Line-Line 2KV)
UL 1598A Marine:	✓
Ingress Protection:	IP-68, IP69k



VISION X USA
1601 Boundary Blvd
Auburn WA 98001
United States of America
P: 253-218-2900
www.vxstructural.com



VISION X ASIA
23-7 Dongtansandan
9-gil Dongtan-myeon Hwaseong-si
Gyeonggi-do 18487, Korea
P: 82-32-515-4814
www.visionxlighting.com