



CONVEYOR BELT LIGHTING

Industrial Applications

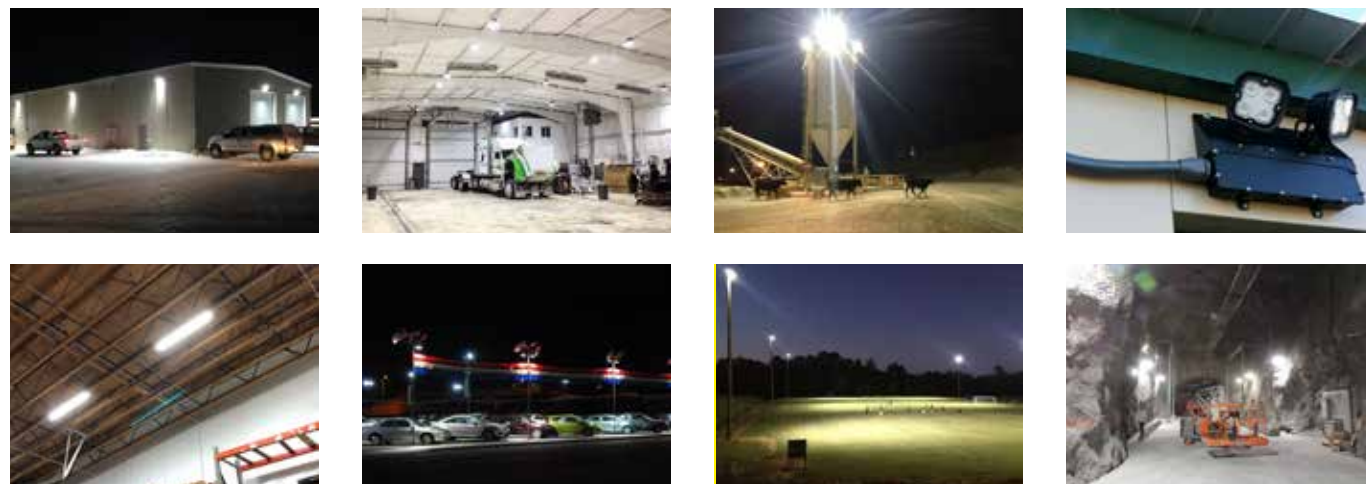


LED | LIGHTING CATALOG

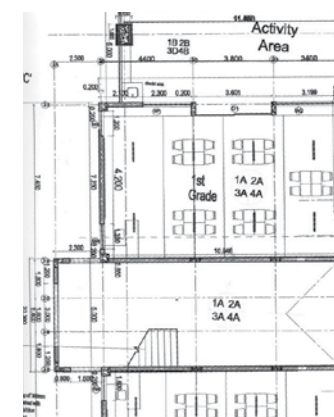


ENGINEERED LIGHTING SOLUTIONS

Vision X lighting fixtures are not merely lighting systems, they are engineered lighting solutions. They provide increased efficiency, increased safety, decreased environmental impact, and decreased costs. Vision X LED lights offer a large increase in energy efficiency over older technologies while also increasing the safety and productivity of the working environment by outputting 80% more light than the fixtures used previously.

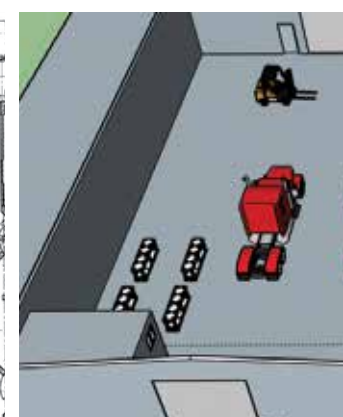


SOLUTION PROCESS



2D BLUEPRINT

Vision X Lighting begins each project with a customer provided list of machines to be retrofitted, then gathers the technical information for those machines.



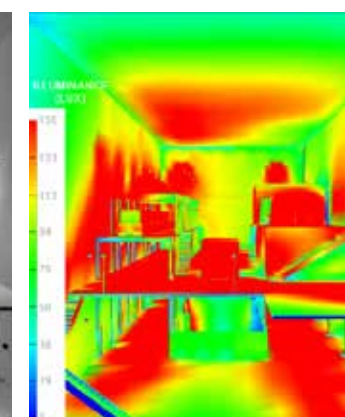
3D MODEL

A 3D model is built to the customer's specifications, then carried over into the rendering.



SIMULATION RENDER

A simulation rendering ensures the final product will meet the customer's lighting requirements.

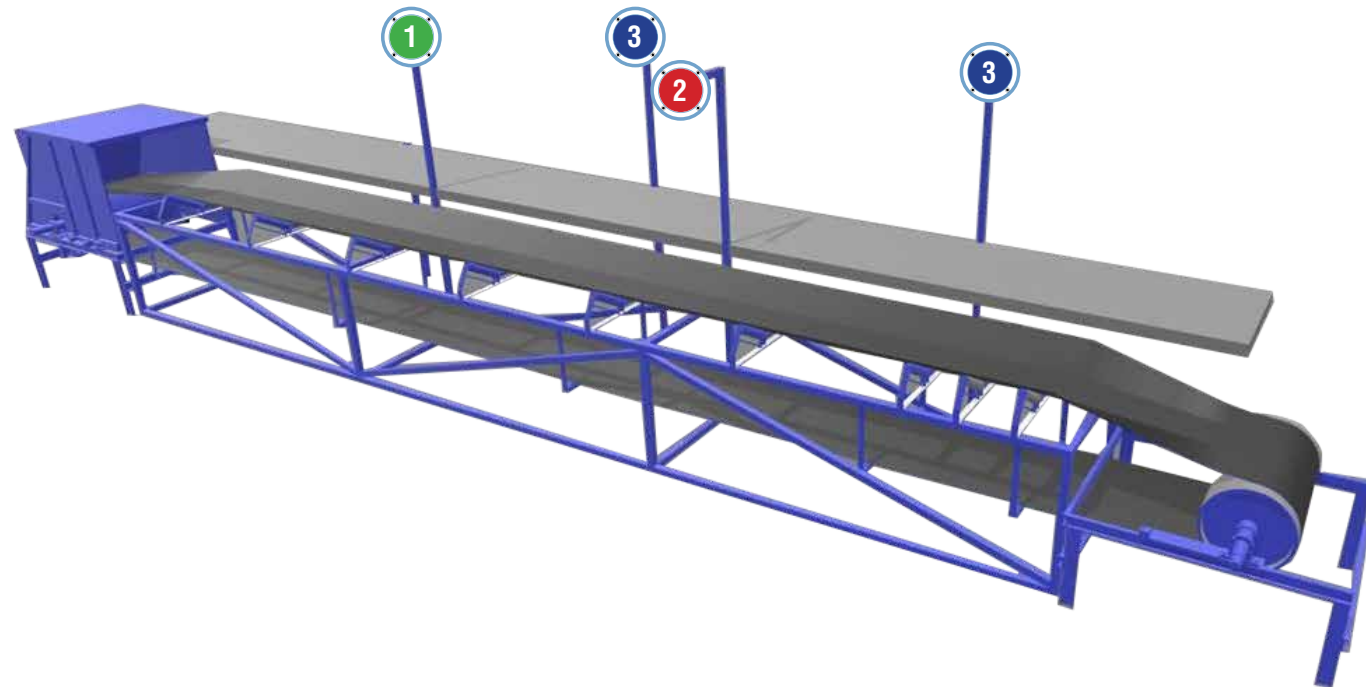


SOLUTION

Vision X Lighting creates a complete breakdown of the customer's specific needs to meet their safety requirements.



CONVEYOR BELT FITOUT GUIDE



1 50-WATT JBOX



CONVEYOR BELT AREA LIGHTING
JUNCTION BOX-SERIES
 Number of Fixtures : Application Specific
 Location : Vertical Mount
 Beam Pattern : **180° Ultra-Wide Flood**
 Part # : **LSG0225180TRS2QC**

2 50-WATT JBOX



CONVEYOR BELT AREA LIGHTING
JUNCTION BOX-SERIES
 Number of Fixtures : Application Specific
 Location : Horizontal Mount
 Beam Pattern : **180° Ultra-Wide Flood**
 Part # : **LSG0225180S2QC**

3 10-WATT JBOX



WALKWAY AREA LIGHTING
JUNCTION BOX-SERIES
 Number of Fixtures : Application Specific
 Location : Walkway
 Beam Pattern : **180° Ultra-Wide Flood**
 Part # : **LSGSM40180F**

NOTES:



JUNCTION BOX

Product Information

Project Name:
Date:
Type:

Application

Designed to outshine and outlast the competition, the Junction Box fixture features advanced electronic technology like Pulse Width Modulation, Electronic Thermal Management, and a Redundant Circuit Design that allow the fixture to function even if half of the light should fail for unknown reasons. This is part of the effort by Vision X to ensure that the Junction Box fixture is the most dependable LED fixture in the workplace.



Mechanical Information:

| | |
|---|----------------------|
| Fixture Weight: | 8 lbs (3.8kg) |
| Shipping Weight: | 10 lbs (4.5kg) |
| Mounting/ Entries: (See Accessories) | (6) 3/4" NPT - SIDES |

Electric Specifications:

| | |
|---------------------------|--|
| Operating Voltage: | 90 - 305VAC 127 - 431VDC |
| Lumens: | 6000-7000 lm |
| Wattage: | 50W |
| Operating Temp: | -40°C - 60°C |
| THD: | <20% (@load≥50% / 115VAC,230VAC) (@load≥75% / 277VAC) |
| Power Factor: | ≥ 0.98/115VAC ≥ 0.95/230VAC ≥ 0.92/277VAC |

| | |
|-----------------------|--|
| Short Circuit: | Constant Current Limiting, Recovers Automatically After Fault Condition is Removed |
| Frequency: | 47-63Hz |
| Vibration: | 15.6Grms |

Construction:

| | |
|-----------------|------------------------|
| Housing: | Die-Cast 6061 Aluminum |
| Finish: | Gloss Grey |
| Lens: | Polycarbonate Lens |

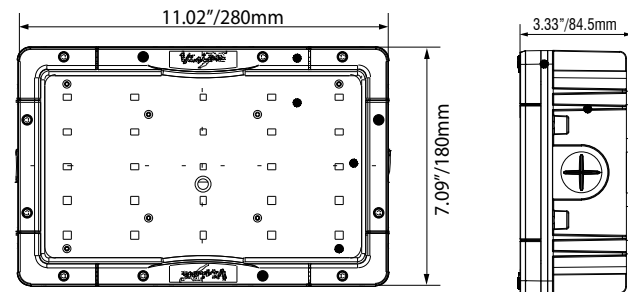
LED Light Engine / Driver

| | |
|------------------|--|
| LED: | MHB-B(CREE) |
| Amp Draw: | 0.43A @ 115VAC 0.22A @ 230VAC 0.18A @ 277VAC |
| Lifespan: | 50,000 hr |

| PART #: | DESCRIPTION |
|--------------------|---|
| ① LSG0225180TRS2QC | 50W JBOX W/Trunnion & 2" Slip Fitting |
| LSG0225180TRS2.5QC | 50W JBOX W/Trunnion & 2.5" Slip Fitting |
| LSG0225180TRS3QC | 50W JBOX W/Trunnion & 3" Slip Fitting |
| LSG0330xxTRS2QC | 50W JBOX Optic W/Trunnion & 2" Slip Fitting |
| LSG0330xxTRS2.5QC | 50W JBOX Optic W/Trunnion & 2.5" Slip Fitting |
| LSG0330xxTRS3QC | 50W JBOX Optic W/Trunnion & 3" Slip Fitting |

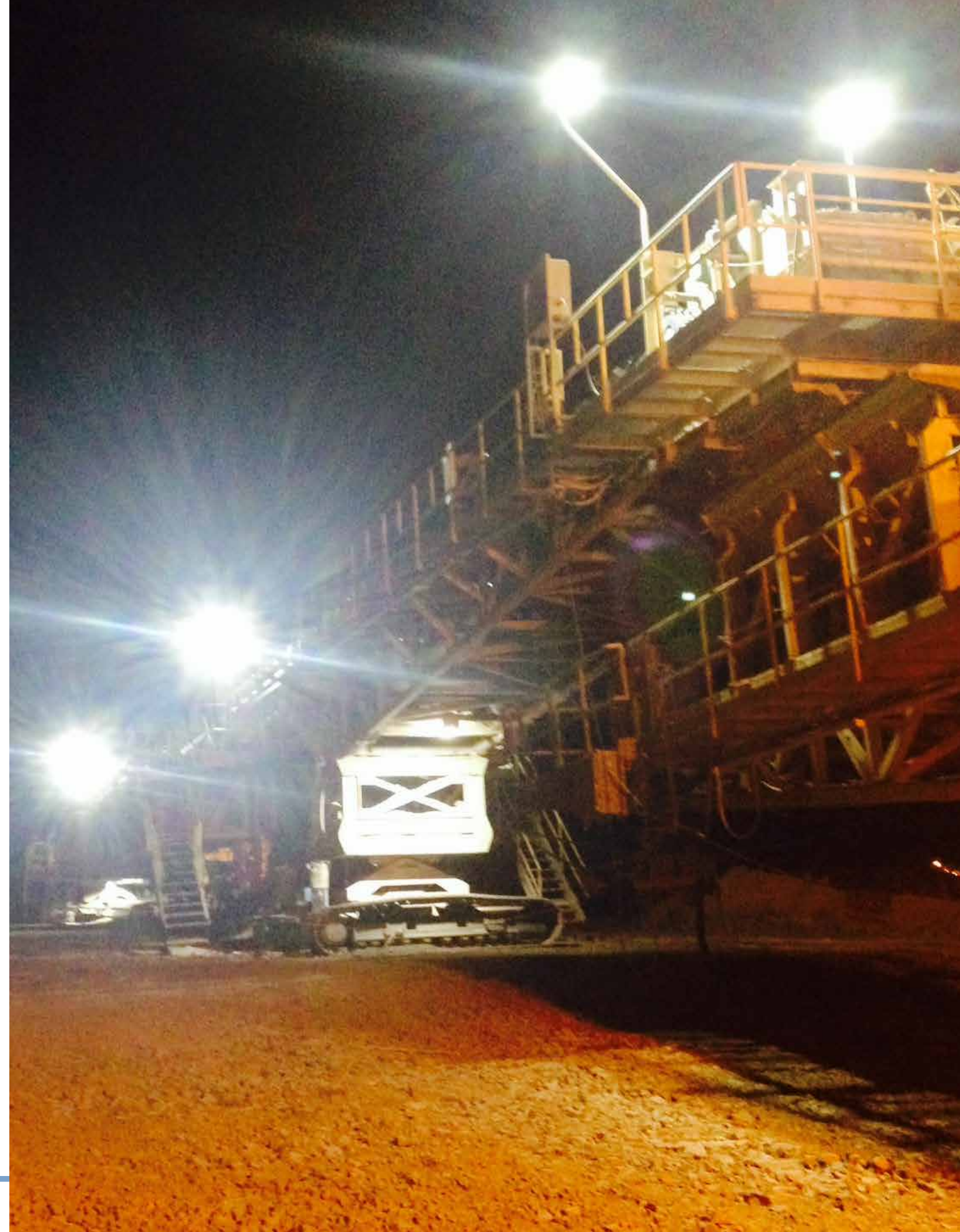
* xx designates optics beam pattern degree options: 10°, 25°, 40°, 60°, 90°

2D DRAWING:



RATINGS:

| | |
|----------------------------|--|
| EMC Emission: | Compliance to EN55022,EN61000-3-2 Class A ,EN61000-3-3 |
| EMC Immunity: | Compliance to EN55024, EN61000-4-2,3,4,5,6,8,11; light industry level(surge 2KV), criteria A |
| UL 1598A Marine: | ✓ |
| Ingress Protection: | IP-68, IP69k |





JUNCTION BOX

Product Information

Project Name:
Date:
Type:

Application

Designed to outshine and outlast the competition, the Junction Box fixture features advanced electronic technology like Pulse Width Modulation, Electronic Thermal Management, and a Redundant Circuit Design that allow the fixture to function even if half of the light should fail for unknown reasons. This is part of the effort by Vision X to ensure that the Junction Box fixture is the most dependable LED fixture in the workplace.

Mechanical Information:

| | |
|---|----------------------|
| Fixture Weight: | 2 lbs (0.9kg) |
| Shipping Weight: | 4 lbs (1.8kg) |
| Mounting/ Entries: (See Accessories) | (4) 3/4" NPT - SIDES |

Electric Specifications:

| | |
|---------------------------|--|
| Operating Voltage: | 90 - 264VAC 127 - 370VDC |
| Lumens: | 1000 lm |
| Wattage: | 10W |
| Operating Temp: | -40°C ~ 60°C |
| THD: | <20% (@load≥50% / 115VAC,230VAC) (@load≥75% / 277VAC) |

| | |
|----------------------|---|
| Power Factor: | ≥ 0.98/115VAC ≥ 0.95/230VAC ≥ 0.92/277VAC |
|----------------------|---|

| | |
|-----------------------|--|
| Short Circuit: | Constant Current Limiting, Recovers Automatically After Fault Condition is Removed |
|-----------------------|--|

| | |
|-------------------|---------|
| Frequency: | 47-63Hz |
|-------------------|---------|

| | |
|-------------------|----------|
| Vibration: | 15.6Grms |
|-------------------|----------|

Construction:

| | |
|-----------------|------------------------|
| Housing: | Die-Cast 6061 Aluminum |
| Finish: | Gloss Grey |
| Lens: | Polycarbonate Lens |

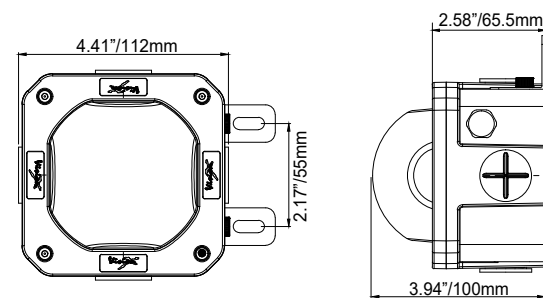
LED Light Engine / Driver

| | |
|------------------|--|
| LED: | 5630(LG) |
| Amp Draw: | 0.09A @ 115VAC 0.04A @ 230VAC 0.04A @ 277VAC |
| Lifespan: | 50,000 hr |



| PART #: | DESCRIPTION |
|---------------|---|
| 3 LSGSM40180F | Frosted Lens 180° Ultra Wide Beam Pattern |

2D DRAWING:



RATINGS:

| | |
|----------------------------|--|
| EMC Emission: | Compliance to EN55022,EN61000-3-2 Class A ,EN61000-3-3 |
| EMC Immunity: | Compliance to EN55024, EN61000-4-2,3,4,5,6,8,11; light industry level(surge 2KV), criteria A |
| UL 1598A Marine: | ✓ |
| Ingress Protection: | IP-68, IP69k |



ACCESSORIES

Product Information

Project Name:
Date:
Type:

Accessory Hardware:



6.6' QUICK CONNECT CABLE
Part# : ****



3/4" JUNCTION BOX QUICK CONNECT
Part# : ****



110V AC PLUG
Part# : ****



240-277V AC TWIST LOCK PLUG
Part# : ****



PENDANT MOUNT HOOK
Part# : LUC-PM



DUSK/DAWN SENSOR
Part# : LUC-DTD



3/4" ADJUSTABLE SWIVEL
Part# : ****



SLIP FITTING
Part# :
2" Diameter : LUC-S2
2.5" Diameter : LUC-S2.5
3" Diameter : LUC-S2.5

Accessory Covers:



RED COVER
Part# : ****



BLUE COVER
Part# : ****



GREEN COVER
Part# : ****



YELLOW COVER
Part# : ****



VISION X USA
1601 Boundary Blvd
Auburn WA 98001
United States of America
P: 253-218-2900
www.vxstructural.com



VISION X ASIA
23-7 Dongtansandan
9-gil Dongtan-myeon Hwaseong-si
Gyeonggi-do 18487, Korea
P: 82-32-515-4814
www.visionxlighting.com