

# 400 | 1000 WATT HPS REPLACEMENT

VXSTRUCTURAL.COM



LED | LIGHTING CATALOG





# LIGHTING SOLUTIONS

## FOR STRUCTURAL APPLICATIONS

Vision X Lighting offers a large increase in energy efficiency over older technologies while also increasing the safety and productivity of the working environment by producing 80% more light than traditional fixtures.

### STAINLESS STEEL BRACKETS

Each fixture can be upgraded to high-strength stainless steel brackets giving the light extra protection against salt water corrosion.

### INCREASED PERFORMANCE

Vision X Lighting products achieve a long lifespan of 50,000+ hours. Certified by Intertek Laboratories and DesignLights Consortium (DLC).

### ANTI-CORROSION

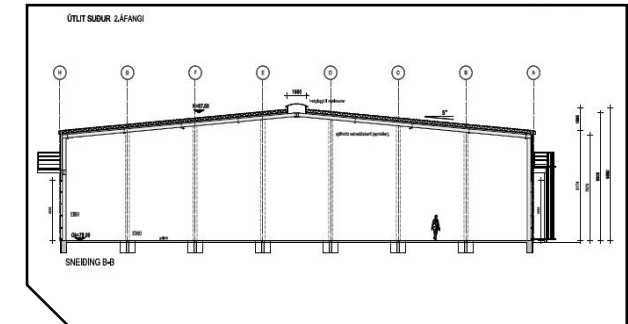
The marine grade polyester powder coating is designed for the exterior environment offering excellent long term light and weather resistance passing multiple chemical and durability tests.



## SOLUTION PROCESS

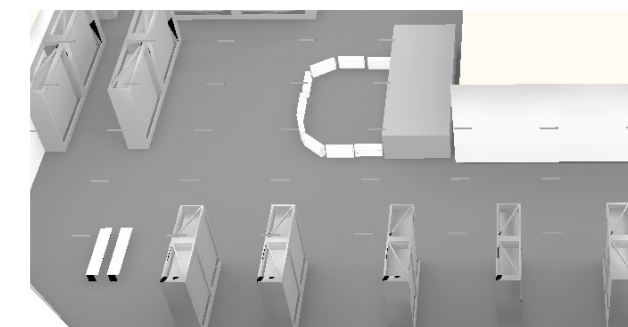
### 2D BLUEPRINT

Vision X Lighting begins each project with a customer provided blueprint to be retrofitted, then gathers the technical information for those structures.



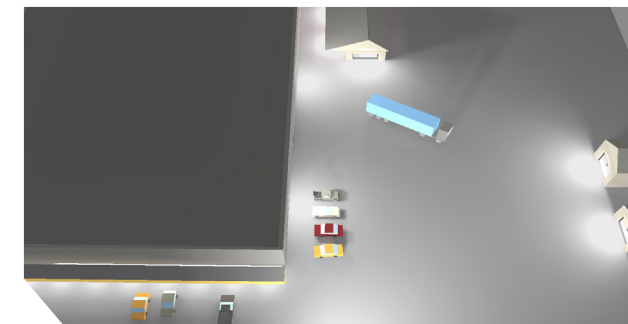
### 3D MODEL

A 3D model is built to the customer's specifications, then carried over into the rendering.



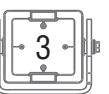
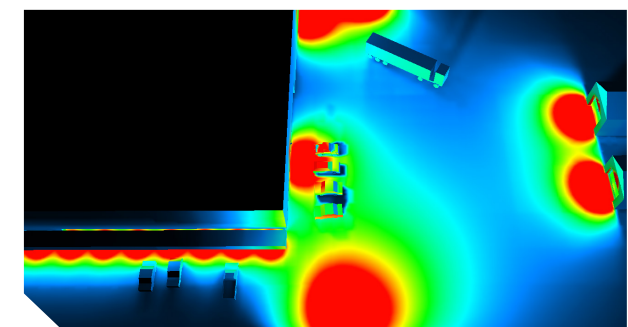
### SIMULATION RENDER

A simulation rendering ensures the final product will meet the customer's lighting requirements.



### SOLUTION

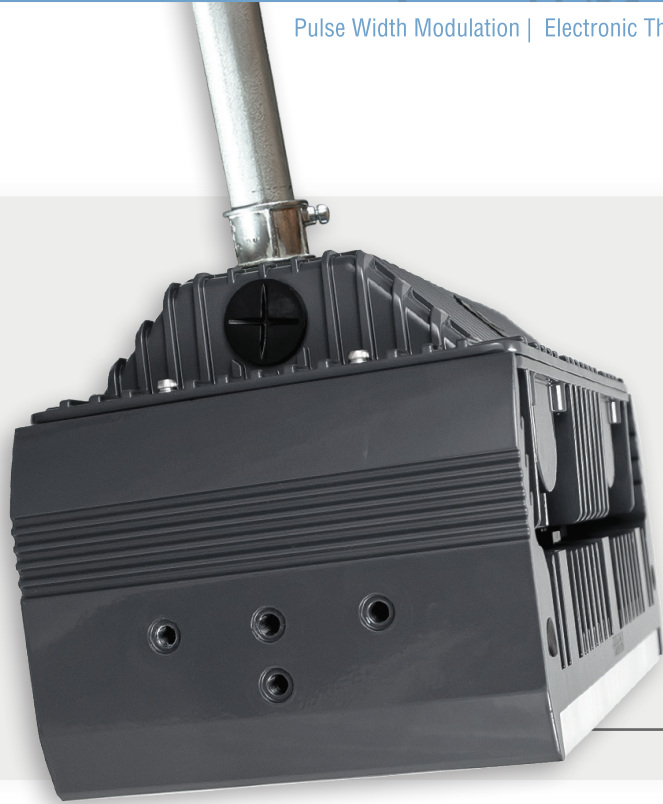
Vision X Lighting creates a complete breakdown of the customer's specific needs to meet their safety and lighting requirements for an engineered solution.





# 400-WATT HPS REPLACEMENT

Pulse Width Modulation | Electronic Thermal Management | Redundant Circuit Design | Extended Warranty



## 140-WATT HIGH BAY

- 400-Watt Metal Halide Replacement
- 18,000-21,000 Lumens, 5000K CCT
- 15.6 Grms Vibration Rating
- 3/4" NPT Quick Connect
- 360 Degree Fully Adjustable Mounting
- 90-305VAC, HV 180-528VAC
- IP-68, IP69K
- Beam Patterns Available: 10°, 25°, 40°, 60°, 90°, 180°

ITEM#: **LSG0630xxxx**  
(High Voltage Available)

12.24" x 7.09" x 7.17"



# 1000-WATT HPS REPLACEMENT

## 280-WATT HIGH BAY

- 1000-Watt Metal Halide Replacement
- 36000 - 42,000 Lumens, 5000K CCT
- 15.6 Grms Vibration Rating
- 3/4" NPT Quick Connect
- 360 Degree Fully Adjustable Mounting
- 90-305VAC, HV 180-528VAC
- IP-68, IP69K
- Beam Patterns Available: 10°, 25°, 40°, 60°, 90°, 180°

ITEM#: **LSG0660xxxx**

15.00" x 13.39" x 7.17"



Standard Heavy Duty Brackets

ITEM#: **LSG0270180TRHDQC**



Standard Trunnion Brackets  
(Stainless Steel Available)

ITEM#: **LSG0270180TR**

Universal Slipfitting

Stainless Steel Heavy Duty Brackets



ITEM#: **LSG0270180STRHDQC**



ITEM#: **LSG0630xxTRUSx**  
(2", 2.5", 3" Pole Mount Kits)

High Voltage Available



ITEM#: **LSG0660xxHV**  
(w/optics 10°, 25°, 40°, 60°, 90°)

ITEM#: **LSG02140180HV**  
(180° Ultra Wide Beam Pattern)

ITEM#: **LSG0660xxSTRHDQC**

Stainless Steel Heavy Duty Brackets



Standard Heavy Duty Brackets



ITEM#: **LSG0660xxTRHDQC**



## Mounting Solutions

Available with 140-Watt and 280-Watt fixtures.



Cobra head mount suited for street and parking lot lighting.

**ITEM#: LSG0630xxCHM2**

**ITEM#: LSG0630xxCHM2.5**

**ITEM#: LSG0630xxCHM3**

(2", 2.5", 3" Diameter Cobra Head Mount Kits)  
Part numbers listed for 140-Watt fixture



Easily and securely mount to poles with universal slip-fitter and stainless steel bolts.

**ITEM#: LSG0660xxTRUS2**

**ITEM#: LSG0660xxTRUS2.5**

**ITEM#: LSG0660xxTRUS3**

(2", 2.5", 3" Diameter Pole Mount Kits)  
Part numbers listed for 280-Watt fixture

## Accessories



6.6' QUICK CONNECT CABLE  
**ITEM# : LAYUC2M**



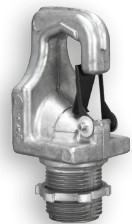
110V AC PLUG  
**ITEM# : P-NEMA110PLUG**



240-277V AC TWIST LOCK PLUG  
**ITEM# : P-NEMA630P**



SLIP FITTING  
**ITEM# : LAGU-x**  
2" Diameter : **LAGU-S2**  
2.5" Diameter : **LAGU-S2.5**  
3" Diameter : **LAGU-S3**



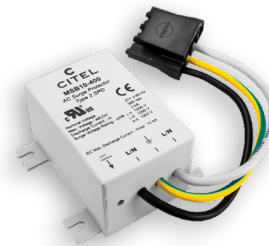
PENDANT MOUNT HOOK  
**ITEM# : LAG-PM**



DUSK/DAWN SENSOR  
**ITEM# : LAG-DTD**



3/4" ADJUSTABLE SWIVEL  
**ITEM# : LAGSW34**



SURGE PROTECTOR  
**ITEM# : P-277VACSURGE**  
High Volt Available

# APPLICATIONS

- WAREHOUSE
- HIGH MAST TOWER
- STORAGE
- RTG CRANE
- GANTRY CRANE
- PARKING GARAGE
- PARKING LOT
- SPORTS ARENA
- UTILITY WORK AREA
- MARINE VESSEL
- CONVEYOR BELT
- INDUSTRIAL FACILITY

