

JUNCTION BOX SERIES

VXSTRUCTURAL.COM



LED | LIGHTING CATALOG



LIGHTING SOLUTIONS

FOR STRUCTURAL APPLICATIONS

Vision X Lighting offers a large increase in energy efficiency over older technologies while also increasing the safety and productivity of the working environment by producing 80% more light than traditional fixtures.

STAINLESS STEEL BRACKETS

Each fixture can be upgraded to high-strength stainless steel brackets giving the light extra protection against salt water corrosion.

INCREASED PERFORMANCE

Vision X Lighting products achieve a long lifespan of 50,000+ hours. Certified by Intertek Laboratories and DesignLights Consortium (DLC).

ANTI-CORROSION

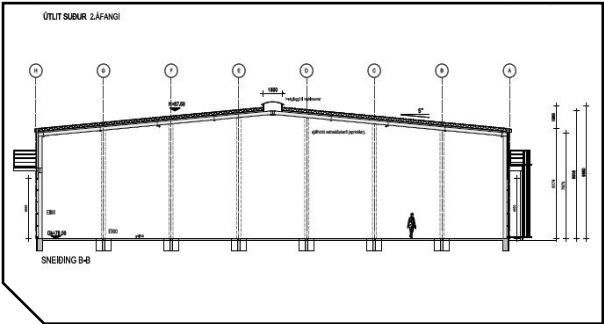
The marine grade polyester powder coating is designed for the exterior environment offering excellent long term light and weather resistance passing multiple chemical and durability tests.



SOLUTION PROCESS

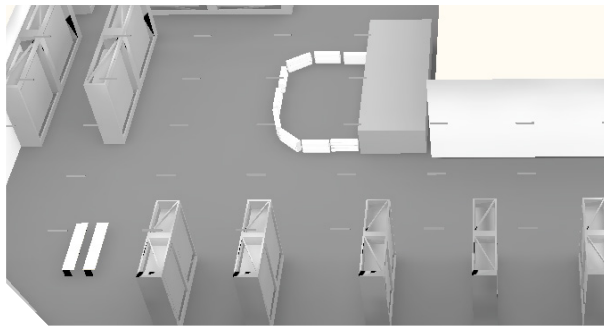
2D BLUEPRINT

Vision X Lighting begins each project with a customer provided blueprint to be retrofitted, then gathers the technical information for those structures.



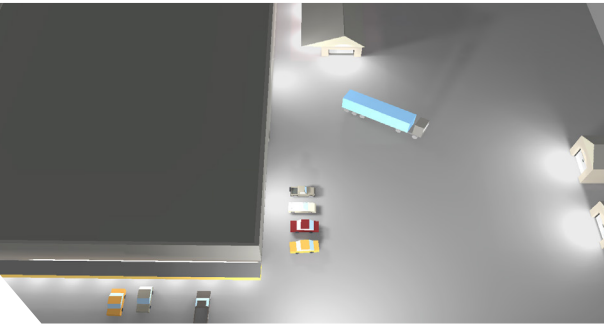
3D MODEL

A 3D model is built to the customer's specifications, then carried over into the rendering.



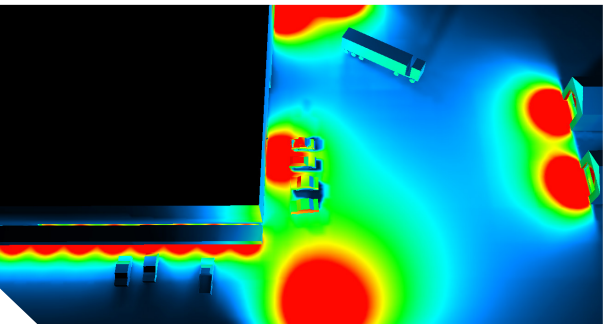
SIMULATION RENDER

A simulation rendering ensures the final product will meet the customer's lighting requirements.



SOLUTION

Vision X Lighting creates a complete breakdown of the customer's specific needs to meet their safety and lighting requirements for an engineered solution.



JUNCTION BOX LIGHTING

Pulse Width Modulation | Electronic Thermal Management | Redundant Circuit Design | 5 Year Extended Warranty

50-WATT JUNCTION BOX



- 7000 Lumens, 5000K CCT
- 50-Watt
- 15.6 Grms Vibration Rating
- 3/4" NPT Quick Connect
- 90-277vAC
- IP68, IP69K
- Beam Patterns Available: 10°, 25°, 40°, 60°, 90°, 180° Ultra Wide Flood

ITEM#: LSG0330xx

(180° Ultra Wide Flood Beam)

ITEM#: LSG0225180



Built-In Battery Backup System
Available

The emergency power supply operates LED lighting should normal power be lost. The BSL310SB senses the power failure and immediately begins driving the LED load in emergency mode at reduced lumen output for a minimum of 90 minutes.

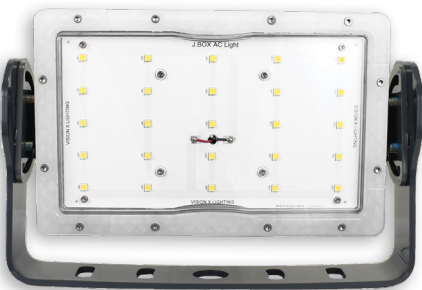
ITEM#: LBG0225180

ITEM#: LBG0330xx



Stainless Steel Trunnion Bracket with Optic Lens

ITEM#: LSG0330xxSTR



Standard Trunnion Bracket with Non-Optic Lens

ITEM#: LSG0225180TR

WALL PACK KIT

- 50-Watt Junction Box
- 15.6 Grms Vibration Rating
- Beam Pattern: 180° Ultra Wide Flood
- Mounting Hardware Included
- 110-277vAC
- IP-68/IP69K
- Beam Patterns Available: 10°, 25°, 40°, 60°, 90°, 180° Ultra Wide Flood

ITEM#: LSG0330xxWP

ITEM#: LSG0225180WP

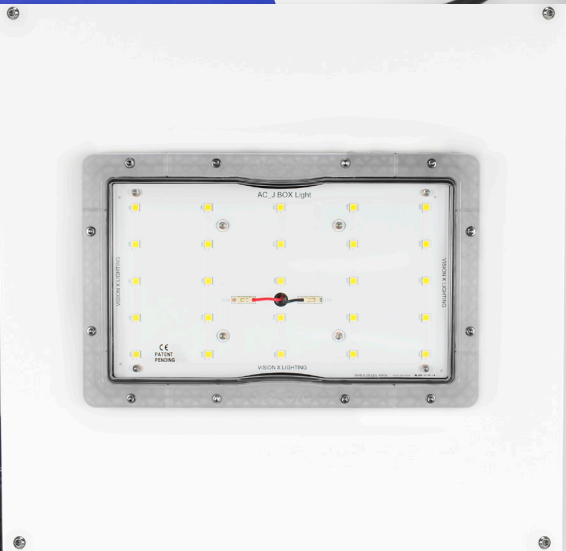


Internal Junction Box for interior connections and through fixture wire routing.

FUEL CANOPY MOUNT

- Powder Coated White
- 50-Watt Junction Box
- 15.6 Grms Vibration Rating
- Beam Pattern: 180° Ultra Wide Flood
- Mounting Hardware Included
- 110-277vAC
- IP-68/IP69K

ITEM#: LSG0225180FC





10-WATT JUNCTION BOX

- 100-Watt Halogen Bulb Replacement
- 1000 Lumens, 5000K CCT
- 15.6 Grms Vibration Rating
- 3/4" NPT Quick Connect
- 90-264VAC
- IP-68, IP69K
- Beam Patterns Available: 180°
- Colored Lens: Red, Amber, Blue, Green



(Frosted Lens)

ITEM#: LSGSM40180Fx

(Clear Lens)

ITEM#: LSGSM40180x

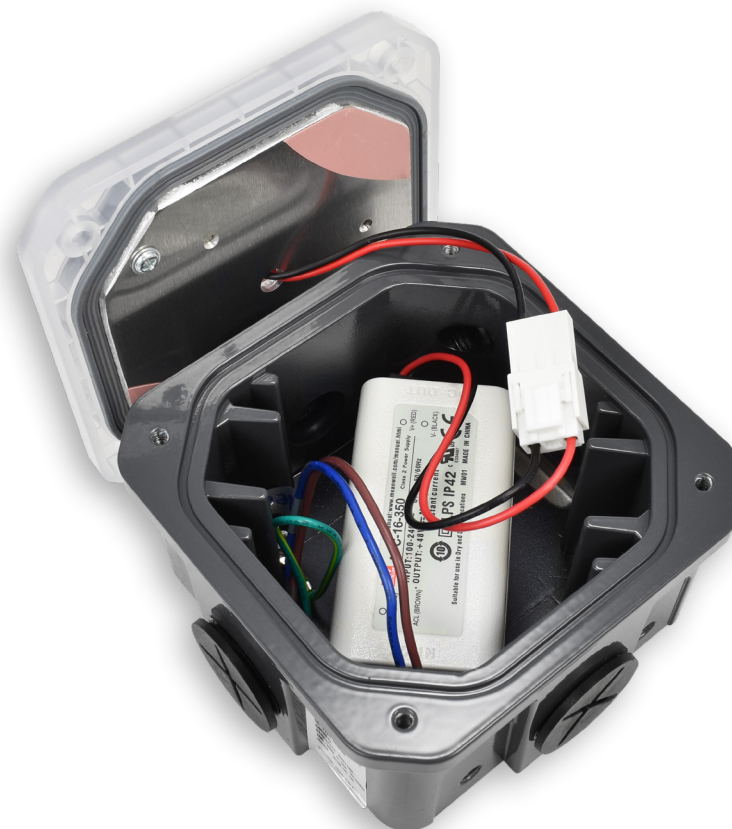


Indicator Series



Fully functional Junction Box used for electrical connections with four 3/4" NPT punch outs.

Mounting Solutions



APPLICATIONS

WAREHOUSE
FUEL CANOPY
STORAGE
RETAIL STORE
PARKING GARAGE
FOYER
HALLWAY
CORRIDOR
UTILITY WORK AREA
MARINE VESSEL
PORT LIGHTING
MINING VEHICLE
COLD STORAGE





NOTES:

VISION X USA

1601 Boundary Blvd
Auburn WA 98001
United States of America
253-218-2900

VISION X ASIA

23-7 Dongtansandan
9-gil Dongtan-myeon Hwaseong-si
Gyeonggi-do 18487, Korea
P: 82-32-515-4814